



# KIWA

I N I T I A T I V E

Nature-based solutions for climate resilience

This project  
is funded by:



EUROPEAN UNION



AFD  
AGENCE FRANÇAISE  
DE DÉVELOPPEMENT

Canada

Australian  
Aid



NEW ZEALAND  
FOREIGN AFFAIRS & TRADE  
Aid Programme

In partnership  
with:



Pacific  
Community  
Communauté  
du Pacifique



SPREP  
Secretariat of the Pacific Regional  
Environment Programme



IUCN

## SUPPORTING NATURE- BASED SOLUTIONS

.....

### FOR BIODIVERSITY AND CLIMATE CHANGE ADAPTATION

.....

The **Pacific Ocean** is a **world heritage** region that needs to be preserved with its **outstanding land and marine biodiversity** that affords priceless services to communities. Located in one of the world's most climate change vulnerable regions, the Pacific countries and territories have little in the **way of resources to take up this challenge**, even though their traditional lifestyles depend on it.

The **Kiwa Initiative** aims to **strengthen the resilience of Pacific countries and territories' ecosystems, economies and communities** by setting up a dedicated one-stop shop for funding projects that promote **Nature-based Solutions (Nbs)**. NBS are defined by IUCN as "actions to protect, sustainably manage and restore natural or modified ecosystems that address societal challenges effectively and adaptively." The Initiative **helps build** both local and national capacity, **promotes approaches** that are sensitive to social vulnerability and gender inequality and **foster dialogue** amongst donors, regional organisations and countries and territories to improve development aid coordination.



## JOINING FORCES



### TO MEET GLOBAL CHALLENGES TOGETHER

Rising to the challenge of climate change adaptation by protecting, developing and restoring biodiversity is the aim of the **Kiwa Initiative**. The multi-donor fund of nearly 35 million euros is managed by the **Agence Française de Développement (AFD)** bringing together for the first time European Union (EUR 13.9 M), Australia (EUR 0.62 M), Canada (EUR 6.8 M), France (EUR 13 M) and New Zealand (EUR 0.60 M).

The Initiative serves communities in **Pacific countries and territories**, including the three French overseas territories, and assists with projects focusing on **NbS** by applying a wide range of support methods.



**0,03%**

Pacific Island countries and territories' share of global greenhouse gas emissions



**5 out of 36**

of the world's biodiversity hotspots are located in the Pacific



**By 2100**

temperatures are projected to rise by 2 to 4 degrees in the South Pacific



**75%**

plant species endemism rate in some Pacific countries



- |                                    |                       |
|------------------------------------|-----------------------|
| 1 • TIMOR-LESTE                    | 10 • TUVALU           |
| 2 • PALAU                          | 11 • WALLIS & FUTUNA  |
| 3 • FEDERATED STATES OF MICRONESIA | 12 • FIJI             |
| 4 • PAPUA NEW GUINEA               | 13 • KIRIBATI         |
| 5 • MARSHALL ISLANDS               | 14 • TOKELAU          |
| 6 • NAURU                          | 15 • SAMOA            |
| 7 • SOLOMON ISLANDS                | 16 • TONGA            |
| 8 • VANUATU                        | 17 • NIUE             |
| 9 • NEW CALEDONIA                  | 18 • COOK ISLANDS     |
|                                    | 19 • FRENCH POLYNESIA |

## EXPECTED OUTCOMES

.....



**Improve**  
funding access for  
nature-based solutions



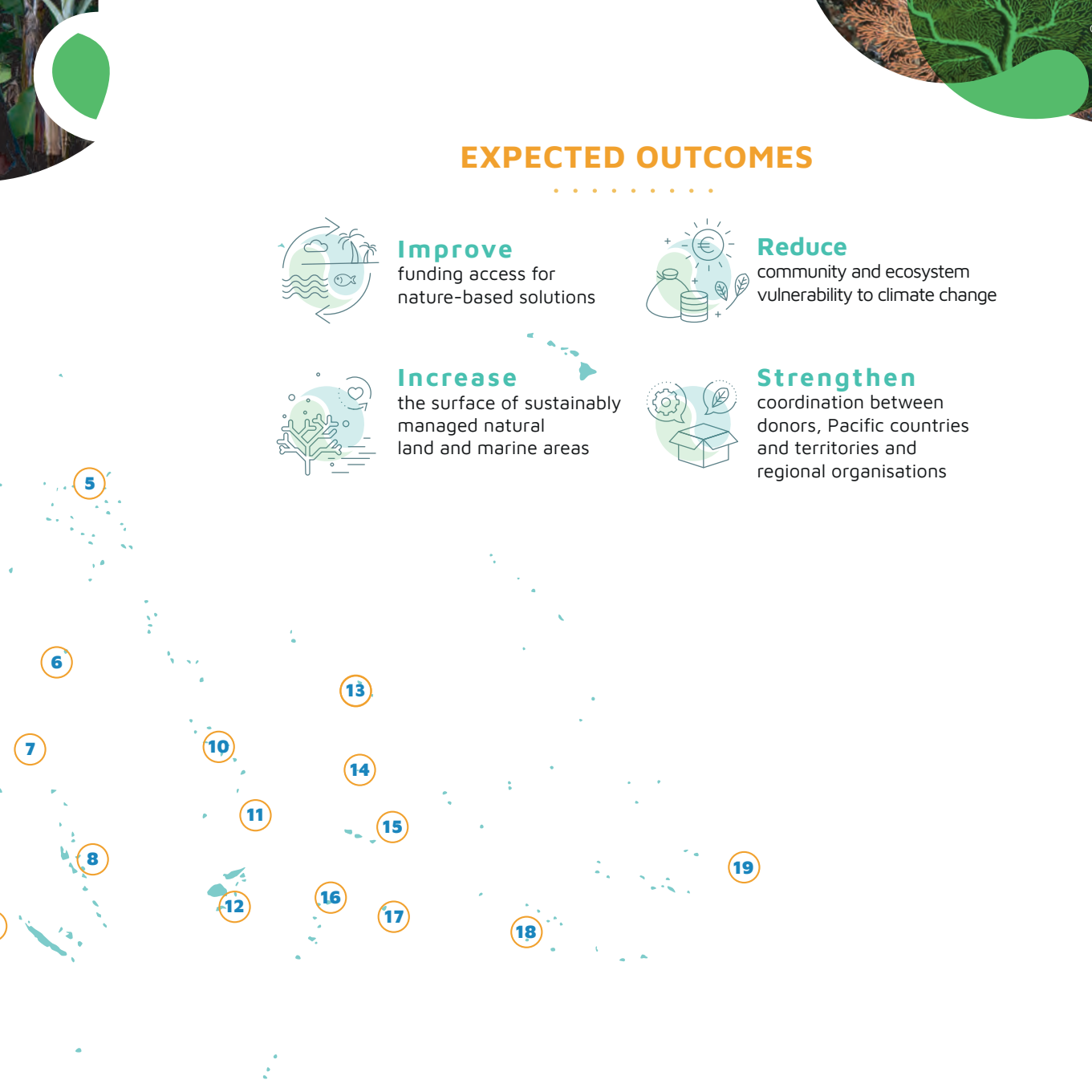
**Reduce**  
community and ecosystem  
vulnerability to climate change



**Increase**  
the surface of sustainably  
managed natural  
land and marine areas



**Strengthen**  
coordination between  
donors, Pacific countries  
and territories and  
regional organisations





## KIWA INITIATIVE IN A NUTSHELL

### WHAT?

#### PROJECT FUNDING AND TECHNICAL ASSISTANCE

for Nature-based Solutions aimed at climate change adaptation in Pacific countries and territories.



### FOR WHOM?

#### THE BENEFICIARIES ARE:

National and local authorities, regional organisations, locally-based and international non-governmental organisations and government-owned corporations.



### HOW?

#### 1) REGIONAL PROJECTS

A one-stop shop for regional projects of over EUR 1.5 M managed by AFD with the support of the Kiwa Initiative Secretariat.



#### 2) LOCAL PROJECTS

Calls for projects managed by the International Union for Conservation of Nature (IUCN) for very small grants (EUR 25,000 to 50,000), small grants (EUR 50,000 to 100,000) and medium-sized grants (EUR 100,000 to EUR 400,000).

#### 3) TECHNICAL ASSISTANCE PROGRAM

A technical assistance programme delivered by the Pacific Community (SPC) and the Secretariat of the Pacific Regional Environment Programme (SPREP).

### WHY?

#### A SYMBOL OF OCEAN AND BIODIVERSITY PROTECTION

Kiwa is one of the guardians of the ocean in some Māori tribes' mythology.







### Contact details :

**KIWA INITIATIVE SECRETARIAT**  
AGENCE FRANÇAISE DE DÉVELOPPEMENT  
PACIFIC OCEAN REGIONAL OFFICE

1 rue de Barleux – BP J1  
98849, Noumea  
New Caledonia  
[kiwa\\_initiative@afd.fr](mailto:kiwa_initiative@afd.fr)

**PACIFIC COMMUNITY (SPC)**

Promenade Roger Laroque,  
98800 Noumea  
New Caledonia  
[spc@spc.int](mailto:spc@spc.int)

**SECRETARIAT OF THE PACIFIC  
REGIONAL ENVIRONMENT  
PROGRAMME (SPREP)**

Avele Rd, Apia Samoa  
[sprep@sprep.org](mailto:sprep@sprep.org)

**INTERNATIONAL UNION FOR  
CONSERVATION OF NATURE  
(IUCN)**

Oceania Regional Office  
5 Ma'afu Street, Private Mail Bag,  
Suva Fiji  
[kiwainitiative@iucn.org](mailto:kiwainitiative@iucn.org)

**For more information:** <https://www.afd.fr/en/kiwa-initiative>  
<https://www.kiwainitiative.org>



**KIWA**  
INITIATIVE

#Kiwainitiative